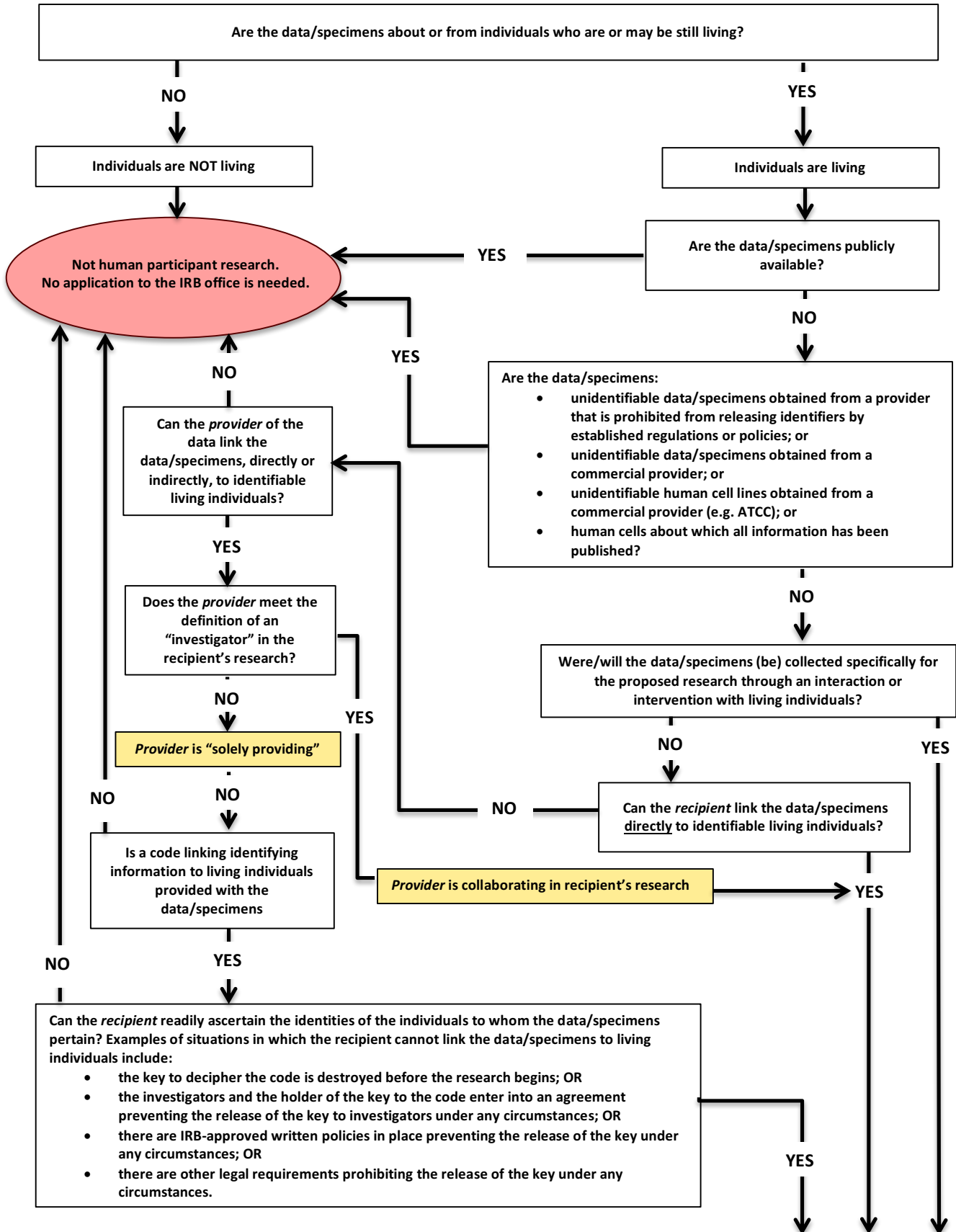


**Does Your Research Involving Secondary or Existing Data, Documents, or Biological Specimens Require Review by the Linfield College IRB?
Decision Tree #2**



Project is research with human subjects.
An application should be submitted to the IRB with written notice of approval (or exemptions) obtained before the study can begin.
Forms available at www.linfield.edu/irb. Questions? Contact tatompki@linfield.edu